

## LM-MultiHolder system

Two MultiHolder instruments and different kinds of replaceable plastic working ends – a real multi-function instrument!

- angle options allow for easy access to even the more complex areas
- optimal combination of steel and plastic – the steel shank is rigid and only the working end will flex, when required

**LM-MultiHolder PK I**  
LM 750-756



**LM-MultiHolder PK II**  
LM 752-754



## Working ends for LM-MultiHolder

### LM-Implant Scaler

For supragingival cleaning of implants.

- completely safe for the titanium abutments
- one design does it all - four instrument angle options and 360° turning scaler enable for easy access to all tooth surfaces

LM 7701 Implant Scaler circa 30 pcs / package



### LM-Contact Formers

Transparent tip for making correctly formed and tight interproximal contact.

- suitable for use with all matrices
- will not stick to composite fillings

Four sizes corresponding to the size of the cavity, circa 60 pcs / package

LM 7622 XS  
LM 7624 S  
LM 7626 M  
LM 7628 L

LM 7620 Assortment package circa 120 pcs (30 pcs / size)



## LM-MultiHolder system

### LM-Gingival Retractors

For establishing optimum working conditions for procedures at the gum line.

Three sizes, circa 60 pcs / package

LM 7502 S for incisors  
LM 7504 M for premolars  
LM 7506 XL for molars

LM 7500 Assortment package circa 90 pcs  
(30 pcs / size)



### LM-Cervical Matrices

For making anatomically correct fillings at the gum line

- protects from moisture
- prevents air bubbles

Four models for different size and shape, circa 60 pcs / package

LM 7602 for incisors  
LM 7604 for canines and premolars  
LM 7606 for small molars  
LM 7608 for large molars

LM 7600 Assortment package circa 120 pcs  
(30 pcs / model)

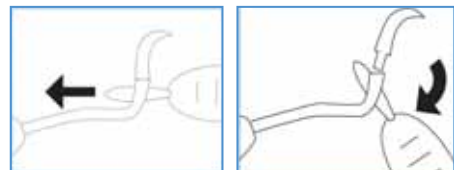


## LM-MultiLever

LM-MultiLever  
LM 7550



For the removal of plastic working end we recommend LM-MultiLever.



## LM-MultiHolder IntroKit

LM-MultiHolder IntroKit  
LM 7555K

The introduction kit contains LM-MultiHolder instruments PK I and PK II (XSi), a MultiLever and samples of all available working ends. There are a total of 48 working ends, 4 for each size of each working end.

You may order LM-MultiHolder IntroKit sample package also separately. LM 7555