

IO INSTRUMENT FOR COMPOSITES

In the spring 1999 a long-awaited addition to the LM product line was introduced: **Packer-Modeller IO (LM 482-483)**, the **IO** composite instrument. **IO** are the initials of dentist Ilkka Ostela, specialist in cariology, the instrument's developer.



LM 482-483



LM 483-703



LM 482-702

Mr Ostela,

- where did you get the idea for this instrument?

IO: It was quite simply because LM lacked this type of composite instrument. That is, an instrument which was well-suited to the shaping of occlusal molar surfaces.

- where do you feel the IO instrument performs at its optimum level?

IO: It's ideal for the shaping of occlusal surfaces. In shallow and small cavities I only use IO instrument for both packing and shaping. In deeper and larger cavities I'll pack with Form Condenser (LM 702-703) and then use the IO instrument, the blade sides and the tip, to do the shaping.

- with what types of composites do you use the IO instrument?

IO: Every kind! The instrument works well with hybrid plastics and packable composites.

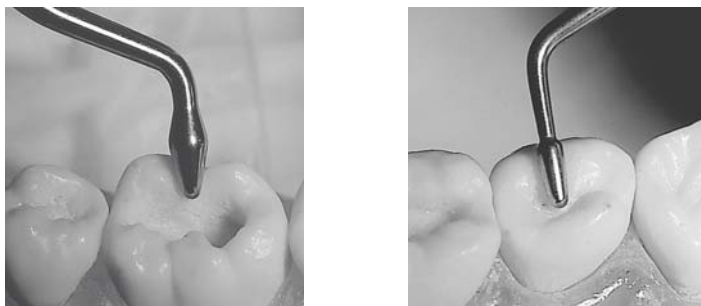
- can the instrument's blade catch in a composite?

IO: No. The blade's surfaces are extremely well polished. This is also affected by the technique with which composites are handled.

- what is your opinion of the use of binding agents with composite instruments?

IO: I don't personally use them, and I don't recommend them to others. When the binding agent and composite come into contact with one

another, the surface is altered. The surface of a binding agent is considerably weaker and wears out much more quickly than a pure composite surface.



- why should the occlusal surface be shaped prior to hardening of the composite?

IO: If the filling is already shaped upon actual filling, less shaping will be required at the finishing stage. Depending on which filling technique is used, the procedure will save time and filling material and, as a result, money.

- can the IO instrument also be used for other procedures?

IO: Certainly, such as in the shaping of matrices before filling cavities. Getting the contact area to an adequate compaction will then be achieved more affectively.

I recommend this instrument to everyone who requires an excellent tool for performing composite filling work in the molar areas.

Interviewee dentist Ilkka Ostela, specialist in cariology

Interviewer Tina Norrman, LM-Instruments Oy
12 / 1999